

To view this email in a web browser, [click here](#)



TUALATIN VALLEY
WATER DISTRICT

UPDATED TIMEFRAME

Planned Water Service Shut Off

Wednesday, August 28, 2024 from

9 a.m. to 3 p.m. (6 hours)

Dear Valued Customer:

Please be advised that water service to your home on SW Viewmont Drive will be temporarily interrupted on Wednesday, August 28, 2024. The service outage is scheduled to occur from 9 a.m. to 3 p.m., lasting approximately six hours.

We previously communicated that each home would experience a one-hour service interruption within this timeframe; however, this information was incorrect. Water service will be unavailable for the entire six-hour period. Information has been updated below.

Shut Off Details

- **Date:** Wednesday, August 28, 2024
- **Time:** From 9 a.m. to 3 p.m.
- **Duration:** 6 hours

The contractor overseen by Tualatin Valley Water District (TVWD) will be disconnecting your water service line from the old water main that served SW Viewmont Drive and connecting it to the newly installed 8-inch water main. Service lines are the pipes that deliver water from the main to your home.

TVWD will be connecting each home's service line to the new main in order. The connection process will take approximately six (6) hours, during which customers will not have water service to their home.

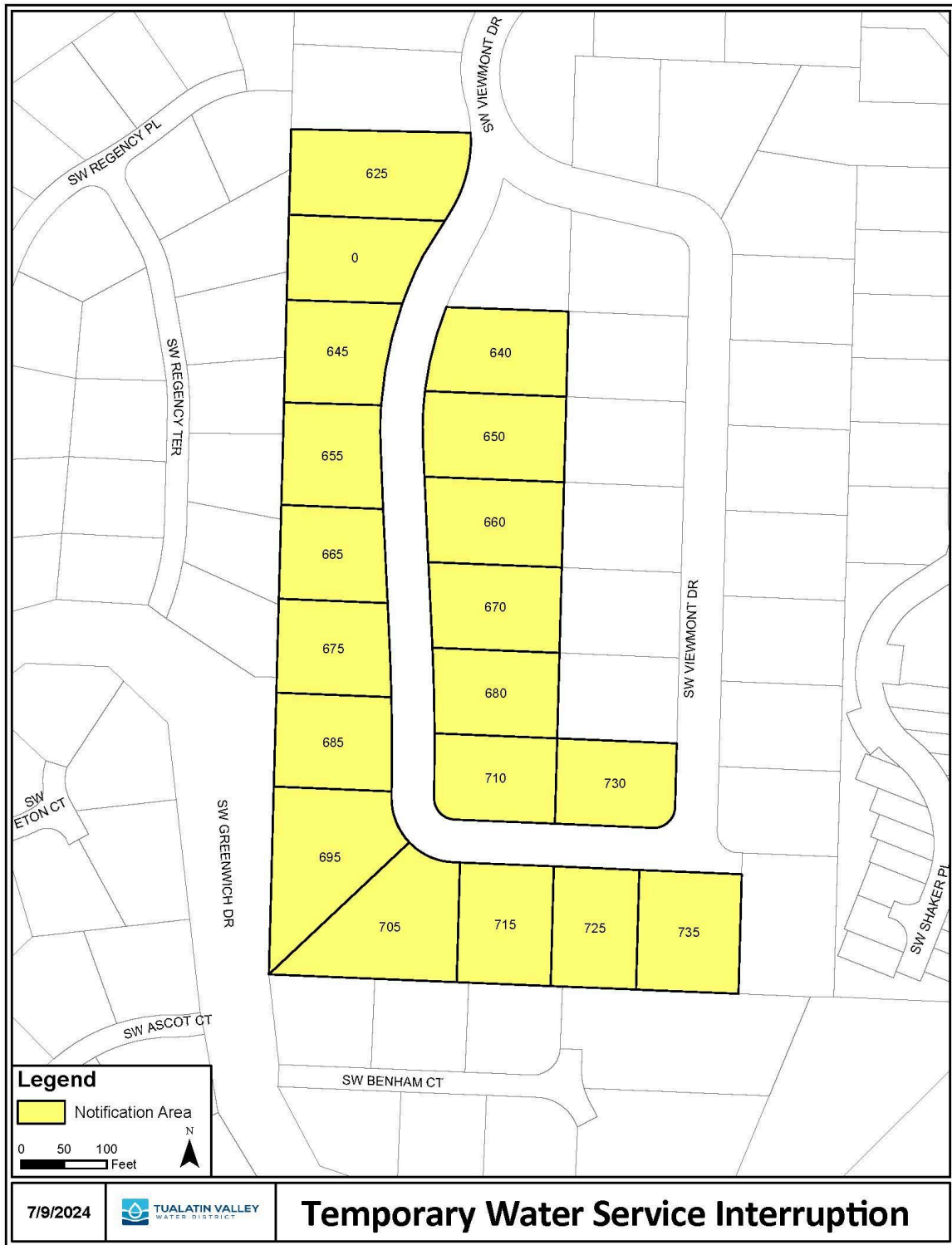
View the map below showing the homes affected by the Wednesday, August 28, 2024, water service shut off.

*NOTE: To fully complete the connection process, a portion of the neighborhood's water service will be shut off on Wednesday, August 28, 2024, and the rest on Thursday, August 29, 2024.

Impacts

During connection work:

- There will be heavy trucks and equipment located nearby.
- You will experience noise, vibration, and dust.
- Access to your home will be maintained.



Next Steps

Once all connections are complete:

- **Connection and Water Pressure:** The Barnes Road Pump Station will begin pumping water up the hill through the new main to your home. You will likely not notice a big difference in your water pressure after the new main begins serving water to the neighborhood.

- **Shut Offs:** No additional water service shut offs to SW Viewmont Drive will be needed as part of this project.
- **Paving:** Temporary patches will be placed on SW Viewmont Drive to maintain traffic flow while preparations for paving are underway. Watch for an email confirming paving details.

Find tips below on how to prepare for the upcoming water service shut off.



PREPARING FOR A WATER SERVICE SHUT OFF

During a water service shutoff, there will be no water available from your home's faucets. Customers should plan to have alternative water sources available for drinking, cooking, and other needs.

Before



Store Water: Fill containers with water for drinking, cooking, and sanitation.



Stay Informed: Note the shut-off start and end times.



Plan Activities: Reschedule tasks that need water, like laundry and dishwashing.



Special Needs: Contact TVWD if water is needed for medical or other specific needs or make alternative arrangements.

During



Keep Faucets Turned Off: Do not leave faucets turned on to avoid issues when service is restored.



Impacts: There will be heavy equipment and trucks onsite. Work will cause noise, vibration, and dust.

After



Water Service Restoration: Turn on a faucet to check if water is flowing. If water does not come out, turn off the faucet, wait for 15 minutes, and then check again.



Flush Faucets: After water service is restored, run cold water through faucets for at least two minutes.



Clean Aerators: Remove and clean the small screens on faucets.

Questions?



(503) 848-3000



Communications@TVWD.org



TVWD.org/Outages

Project Questions and Feedback

- **Call:** 503-848-3012
- **Email:** Communications@TVWD.org
- **Access:** TVWD.org/BarnesRoad
- **Visit:** 1850 SW 170th Avenue, Beaverton, Oregon 97003

We appreciate your patience and understanding as we work to improve the water system serving your neighborhood. Learn more about TVWD –your drinking water provider – at TVWD.org.

[Project Webpage](#)

Tualatin Valley Water District
1850 SW 170th Ave
Beaverton, OR 97003
(503) 848-3000 | twvd.org
[Unsubscribe](#)